

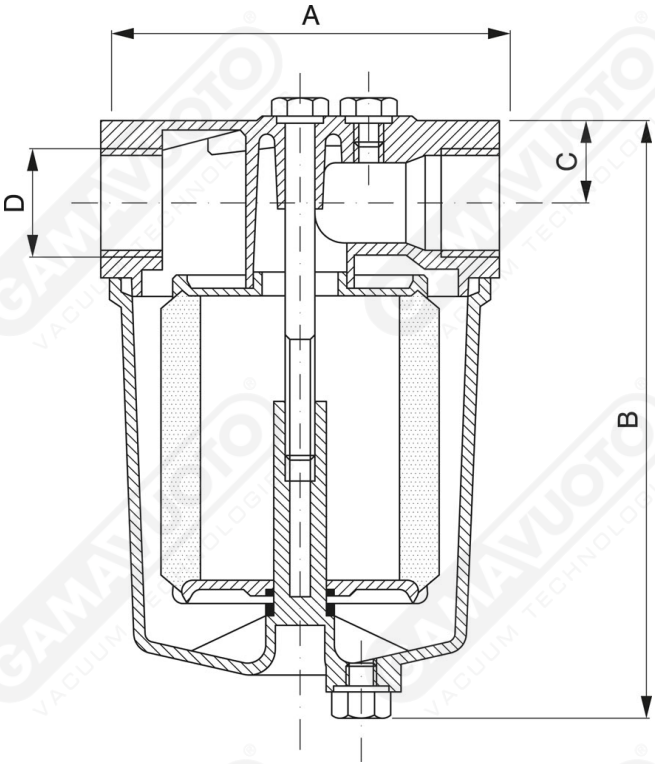


**Aluminium vacuum filters - FA Series**

This series of filters with threaded attachments is made of cast aluminium elements. All the filters come with stainless steel cartridges. Degree of filtering from 40 to 100 microns. Working temperature from 0° to 90°c.

**Mounting, maintenance and cleaning**

Be very careful to adhere to the flow direction, as indicated by the arrow on the filter. The filters can be mounted in any position, though we advise mounting them in the vertical position, with the tub facing downwards, thus making it easier to deposit the filtered impurities. For cleaning operations, unscrew the screws on the cover, remove the tub, and carefully wash the cartridge with diesel oil or petrol, and blow compressed air from the inside outwards; assemble everything, taking care to check that the seals are undamaged and in their correct positions. For models that do not have screws, unscrew the tub by hand, clean it as described above, then remount it by hand tightening gently.



**Art. FA 7 - FA 250**

Art.	A	B	C	DØ
FA7-1/4	61	75	12.5	1/4" gas
FA7-3/8	61	75	12.5	3/8" gas
FA15	81	85	21	3/8" gas
FA18	81	117	21	1/2" gas
FA30	96	141	29	3/4" gas
FA35	120	175	29	1" gas
FA160	190	225	39	1 1/4" gas
FA200	190	225	39	1 1/2" gas
FA250	182	275	39	2" gas

