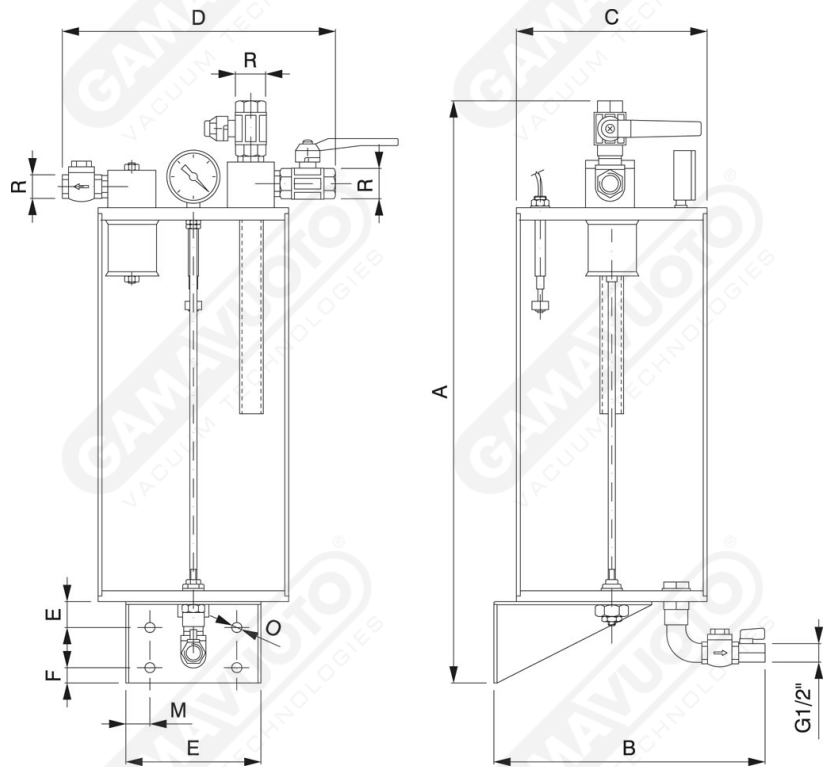




Siphon filters

These filters are particularly useful as an extra safety measure for vacuum pumps when the inflowing air contains particular impurities: liquid and / or dust. They consist of a container made of “inspectionable” transparent Plexiglas, a filtering cartridge with a stainless steel mesh with a porosity of 60 microns, 2 two-way hand-operated valves, a retaining valve, a vacuum gauge, a magnetic level switch, a retaining valve and a tap on the outlet, and a metal bracket for fixing the filters.



Art. FS 10

Art.	A	B	Cø	D	R	E	F	M	O
FS 10	640	370	240	320	1" gas	25	21.5	29.5	11
FS 30	780	370	240	320	1" gas	25	21.5	29.5	11