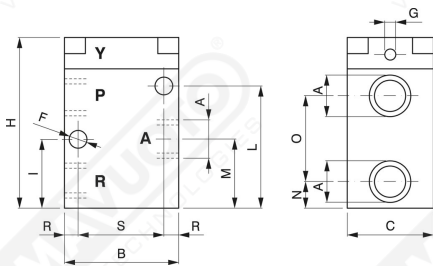




## Vacuum valves with pneumatic control

The 2 or 3-way position valves are useable N.O. or N.C.

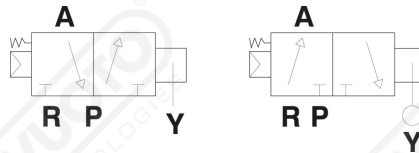
- Valve body : painted aluminium
- Spring: harmonic steel
- Gaskets: Viton
- Fluid temperature: -5°C + 60°C



Art.	AØ	Orif. Ø	B	C	FØ	GØ	H	I	L	M	N	O	R	S	Capacity m <sup>3</sup> /h
<b>EPP 1/4"</b>	1/4"	8	58.5	32	4.5	1/8"	79	35.5	47	36	24	23	10	40	5
<b>EPP 1/2"</b>	1/2"	15	70	35	6.5	1/8"	87	33	51	33	16	34	10	50	20
<b>EPP 3/4"</b>	3/4"	19	80	50	8.5	1/8"	118	43	83	51	21	58	10	60	35
<b>EPP 1"</b>	1"	25	80	50	8.5	1/8"	118	43	83	51	21	58	10	60	90

**Art. EPP**

\* A 755 mm Hg The 3 way vacuum valves can operate as 2 way systems, with the use of a plug.



**Art. EPP**

NC  
P OUTLET  
R USE  
A PUMP  
Y AIR CONTROL 3:8 bar

NO  
P PUMP  
R USE  
A OUTLET  
Y AIR CONTROL 3:8 bar